

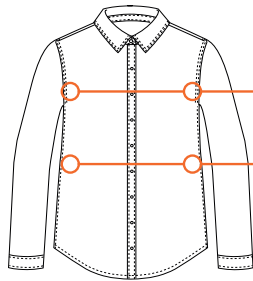
# WOMEN'S FITS

TOPS ALPHA SIZING		XS	S	M	L	XL	2XL	3XL
<b>BUST/CHEST</b>	in	32 - 34	35 - 36	37 - 38	39.5 - 41	42 - 44	46 - 48	50 - 52
	cm	81.5 - 86.5	89 - 91.5	94 - 96.5	100.5 - 104	106.5 - 111.5	117 - 122	127 - 132
<b>WAIST</b>	in	24.5 - 25.5	26.5 - 27.5	28.5 - 29.5	31 - 32.5	34.5 - 36.5	38.5 - 40.5	42.5 - 44.5
	cm	62 - 64.5	67.5 - 70	72.5 - 75	79 - 82.5	87.5 - 93	97.5 - 103	108 - 113
<b>HIP</b>	in	34.5 - 35.5	36.5 - 37.5	38.5 - 39.5	41 - 42.5	44.5 - 46.5	48.5 - 50.5	52.5 - 54.5
	cm	88 - 90	93 - 95	98 - 100.5	104 - 108	113 - 118	123 - 128.5	133.5 - 138.5

BOTTOMS ALPHA WAIST SIZE		XS	S	M	L	XL	2XL	3XL							
<b>WAIST</b>	in	25.5	26.5	27.5	28.5	29.5	31	32.5	34.5	36.5	38.5				
	cm	64.5	67.5	70	72.5	75	79	82.5	87.5	93	97.5				
<b>HIP</b>	in	35.5	36.5	37.5	38.5	39.5	41	42.5	44.5	46.5	48.5				
	cm	90	93	95	98	100.5	104	108	113	118	123				
<b>BOTTOMS NUMERIC WAIST SIZE</b>		<b>0</b>	<b>2</b>	<b>4</b>	<b>6</b>	<b>8</b>	<b>10</b>	<b>12</b>	<b>14</b>	<b>16</b>	<b>18</b>	<b>20</b>	<b>22</b>	<b>24</b>	<b>26</b>

## RELAXED FIT

Designed to sit away from the body for a loose, easy fit

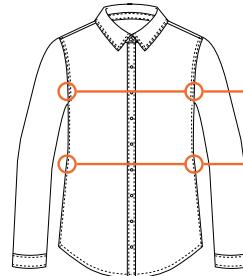


AMPLE ROOM IN THE BUST AND SHOULDERS

LOOSE AND DRAPEY FIT ON THE BODY

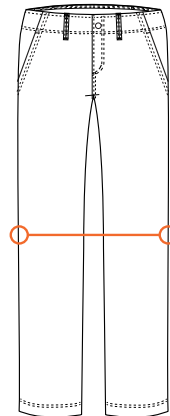
## STANDARD FIT

Classic and comfortable, allowing for ease of movement.



COMFORTABLE FIT AT SHOULDERS AND BUST

ROOM TO MOVE WITHOUT EXCESS FABRIC

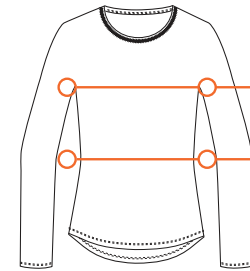


ROOM TO MOVE WITHOUT EXCESS FABRIC

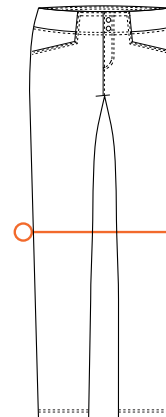
LEG OPENING FALLS STRAIGHT FROM THE HIP

## TRIM FIT

Narrower at the thigh, knee and ankle. Cut to sit close to the body for a slim active fit. Will always utilize a stretch fabric.



SKIMS THE BUST, SHOULDERS AND WAIST



FORMS TO THE BODY AND UTILIZES FABRIC STRETCH

CUT CLOSE TO THE KNEE AND THIGH FOR A SLIM PROFILE

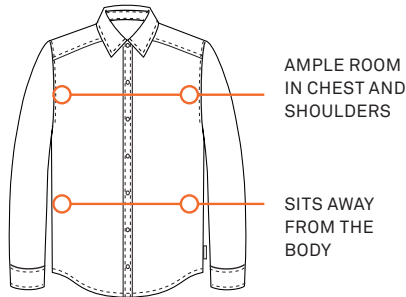
# MEN'S FITS

TOPS ALPHA SIZING		S	M	L	XL	2XL	3XL	4XL
CHEST	in	36 - 38	39 - 41	42 - 44	46 - 48	50 - 52	54 - 57	57 - 60
	cm	91.5 - 96.5	99 - 104	106.5 - 112	116.5 - 122	127 - 132	137 - 145	145 - 152.5
WAIST	in	28 - 30	32 - 34	36 - 38	40 - 42	44 - 46	48 - 50	52 - 54
	cm	71 - 76	81 - 86.5	91.5 - 96.5	101.5 - 106.5	112 - 116.5	122 - 127	132 - 137

BOTTOMS ALPHA WAIST SIZE		S	M		L		XL		2XL			
WAIST	in	29-30	31-32	32-33	33-34	34-35	35-37	37-39	39-41	41-43	43-45	45-47
	cm	73.5-76	78.5-81	81-83.5	83.5-86.5	86.5-90	90-94	94 - 99	99 - 104	104 - 109	109 -114.5	114.5 -119.5
HIP	in	35-36	37-38	38-39	39-40	40-41	41-43	43-45	45-46	46-49	49 -51	51-53
	cm	90-91.5	94-96.5	96.5-99	99-101.5	101.5-104	104-109	109-114.5	114.5 - 117	117 - 124.5	124.5 -129.5	129.5 -134.5
BOTTOMS NUMERIC WAIST SIZE		<b>30</b>	<b>32</b>	<b>33</b>	<b>34</b>	<b>35</b>	<b>36</b>	<b>38</b>	<b>40</b>	<b>42</b>	<b>44</b>	<b>46</b>

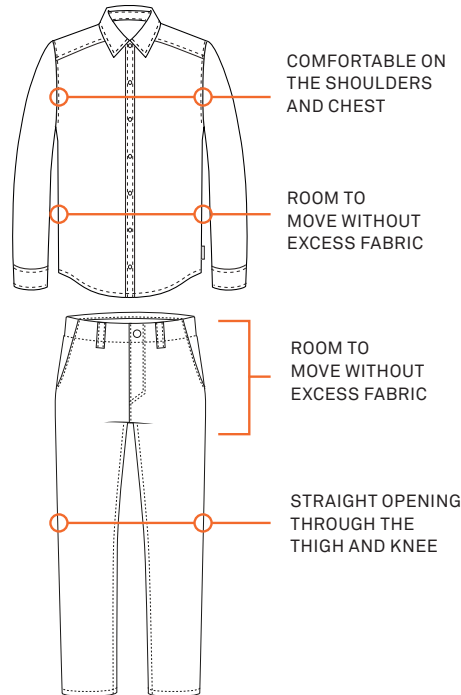
## RELAXED FIT

Relaxed shoulders and a more generous cut designed to sit away from the body for a looser fit.



## STANDARD FIT

Sits at shoulders and allows freedom of movement. Designed to fit comfortably away from the body without excess fabric.



## ACTIVE FIT

Designed to sit close to the body for an active comfortable fit.

